

Concealed Runner Series

 AVANT ITALY GROUP S.R.L.
VIA SANTO STEFANTO 16
BOLOGNA (BO) CAP 40125
 sales@avantitalygroup.it

www.avantitalygroup.it

Concealed Runner

Soft Close Concealed Runner

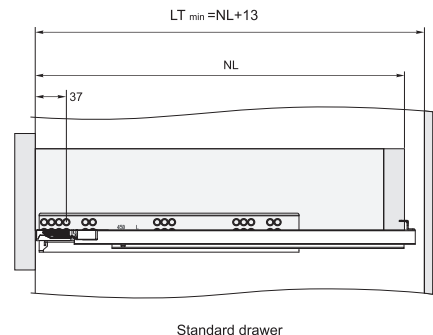
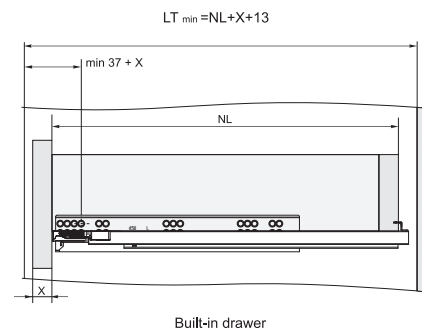
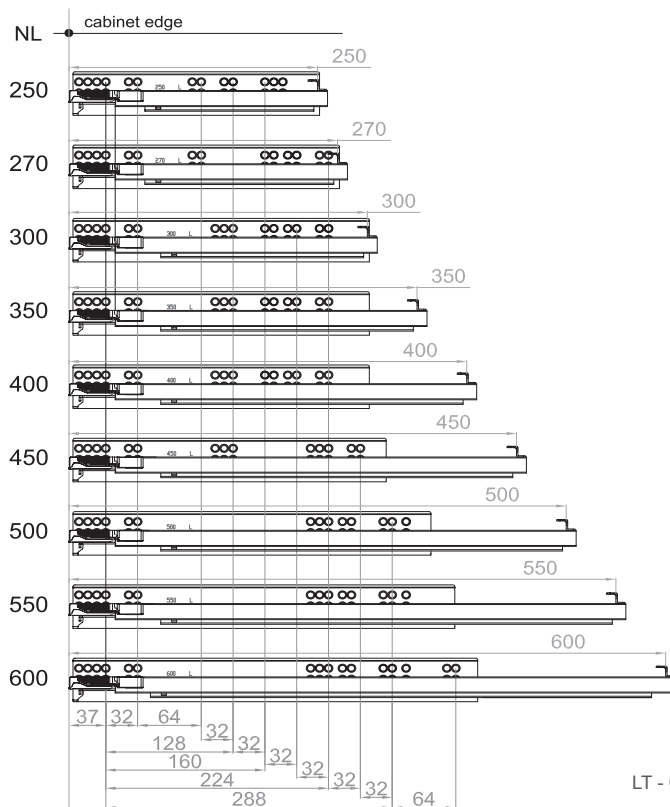


Technical specifications:

- Main material: galvanized sheet.
- Max loading capacity: 30kg.
- Life guarantee: 50,000 cycles.
- Thickness of board: $\leq 19\text{mm}$.
- Adjustable opening and closing strength: $+25\%$
- Full extension, handle front fixing device, easy height adjustment.
- Outstanding sliding stability.
- Easy and safe mounting and dismantling for drawers.
- Opening and closing strength can be adjusted with eccentric screw on the damper.

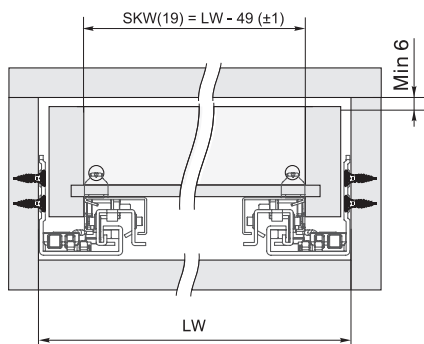


Installation dimensions



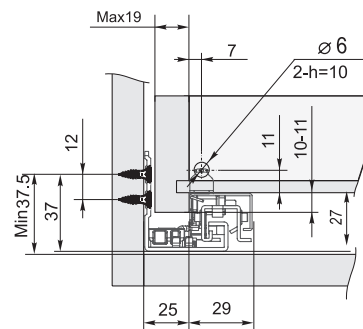
LT - Cabinet inner depth NL - Nominal slide length X - Board thickness

ITEM CODE	ITEM DESCRIPTION	COLOR
6035.31.4231	AVANT C.RUNNER SOFT CLOSE FULL EXTENSION 250MM + 3D CLIP	Zinc-plated
6035.32.4231	AVANT C.RUNNER SOFT CLOSE FULL EXTENSION 270MM + 3D CLIP	Zinc-plated
6035.33.4231	AVANT C.RUNNER SOFT CLOSE FULL EXTENSION 300MM + 3D CLIP	Zinc-plated
6035.34.4231	AVANT C.RUNNER SOFT CLOSE FULL EXTENSION 350MM + 3D CLIP	Zinc-plated
6035.35.4231	AVANT C.RUNNER SOFT CLOSE FULL EXTENSION 400MM + 3D CLIP	Zinc-plated
6035.36.4231	AVANT C.RUNNER SOFT CLOSE FULL EXTENSION 450MM + 3D CLIP	Zinc-plated
6035.37.4231	AVANT C.RUNNER SOFT CLOSE FULL EXTENSION 500MM + 3D CLIP	Zinc-plated
6035.38.4231	AVANT C.RUNNER SOFT CLOSE FULL EXTENSION 550MM + 3D CLIP	Zinc-plated
6035.39.4231	AVANT C.RUNNER SOFT CLOSE FULL EXTENSION 600MM + 3D CLIP	Zinc-plated

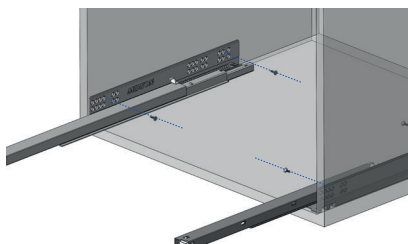


LW - Cabinet inner width

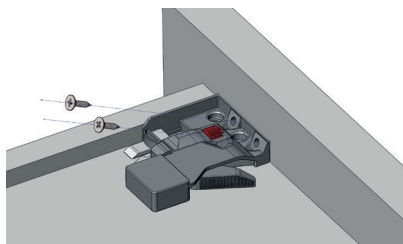
SKW(19) - Drawer inner width (≤19mm drawer side thickness)



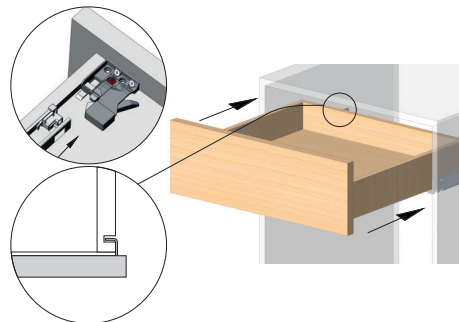
1. Install the runners on the cabinet



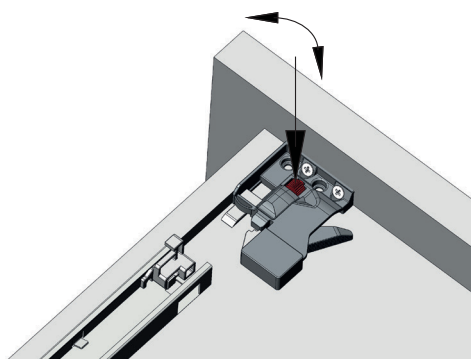
2. Install left/ right handle in the front of the drawer



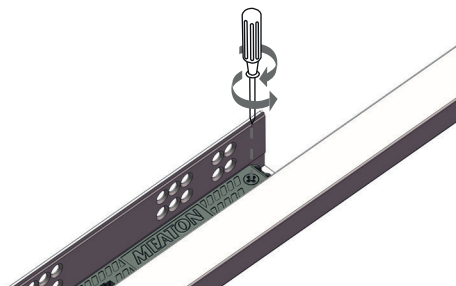
3. Install the drawer on the runners, slide hooks insert into the pre-drilled holes on the drawer back panel



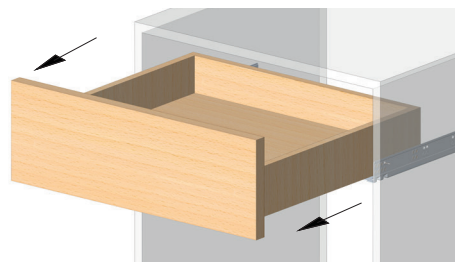
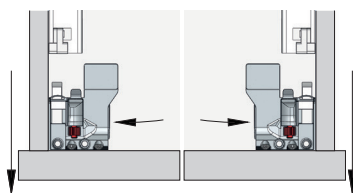
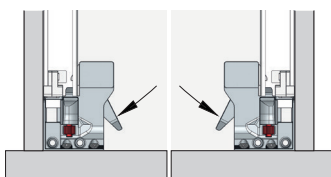
4. Adjust the front panel with plastic wheel on the handle, 0-2.5mm



5. Adjustable opening and closing mechanism:
When the drawer takes more than 25kg, adjust the eccentric screw on the damper, max 25% more strength will be applied, so that make the movement smooth.



6. Push the handle lever to unlock the drawer, then pull out the drawer



Concealed Runner



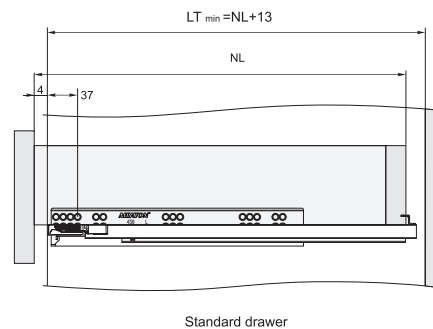
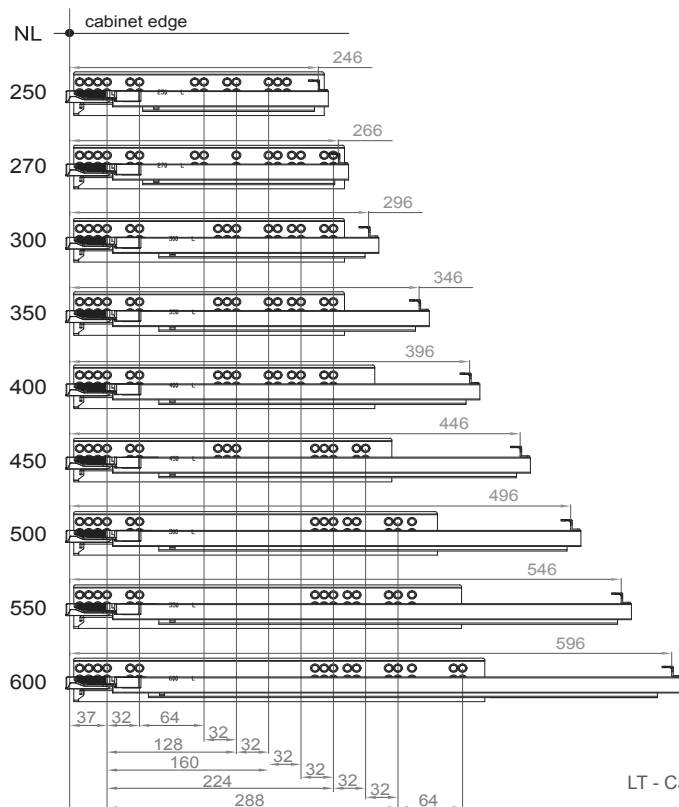
Push To Open Concealed Runner

Technical specifications:



- Main material: galvanized sheet.
- Max loading capacity: 30kg.
- Life guarantee: 50,000 cycles.
- Usage: variety of drawers.
- Thickness of board: $\leq 19\text{mm}$.
- Full extension, handle front fixing device, easy height adjustment.
- Outstanding sliding stability.
- Easy and safe mounting and dismantling for drawers.

Installation dimensions

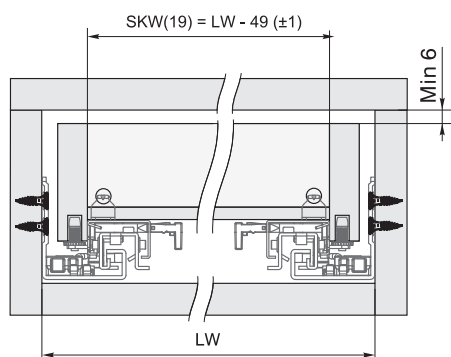


LT - Cabinet inner depth

NL - Nominal slide length

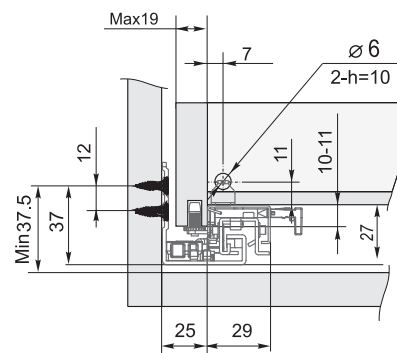
X - Board thickness

ITEM CODE	ITEM DESCRIPTION	COLOR
6035.51.4231	AVANT C.RUNNER PUSH TO OPEN FULL EXTENSION 250MM + 3D CLIP	Zinc-plated
6035.52.4231	AVANT C.RUNNER PUSH TO OPEN FULL EXTENSION 270MM + 3D CLIP	Zinc-plated
6035.53.4231	AVANT C.RUNNER PUSH TO OPEN FULL EXTENSION 300MM + 3D CLIP	Zinc-plated
6035.54.4231	AVANT C.RUNNER PUSH TO OPEN FULL EXTENSION 350MM + 3D CLIP	Zinc-plated
6035.55.4231	AVANT C.RUNNER PUSH TO OPEN FULL EXTENSION 400MM + 3D CLIP	Zinc-plated
6035.56.4231	AVANT C.RUNNER PUSH TO OPEN FULL EXTENSION 450MM + 3D CLIP	Zinc-plated
6035.57.4231	AVANT C.RUNNER PUSH TO OPEN FULL EXTENSION 500MM + 3D CLIP	Zinc-plated
6035.58.4231	AVANT C.RUNNER PUSH TO OPEN FULL EXTENSION 550MM + 3D CLIP	Zinc-plated
6035.59.4231	AVANT C.RUNNER PUSH TO OPEN FULL EXTENSION 600MM + 3D CLIP	Zinc-plated

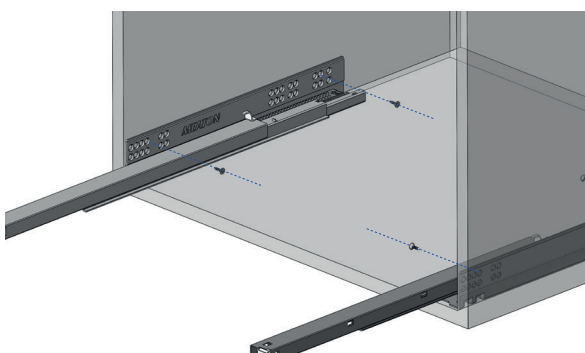


LW - Cabinet inner width

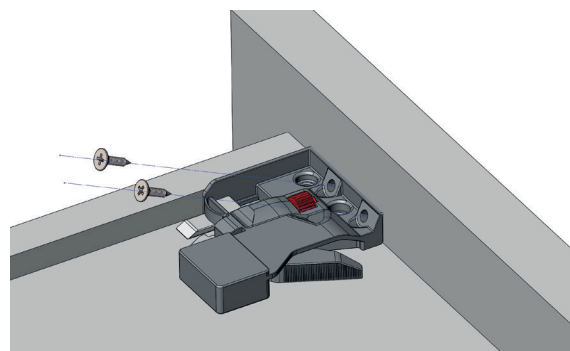
SKW(19) - Drawer inner width(≤19mm drawer side thickness)



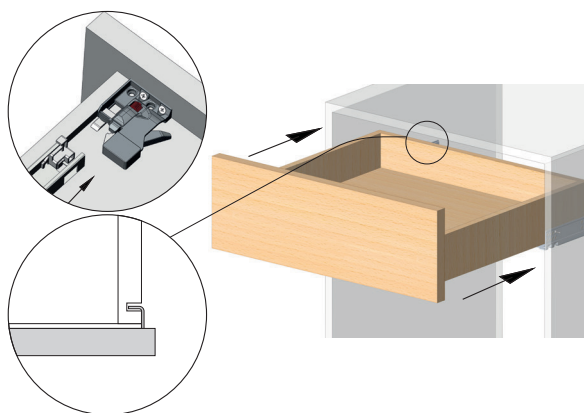
1. Install the runners on the cabinet



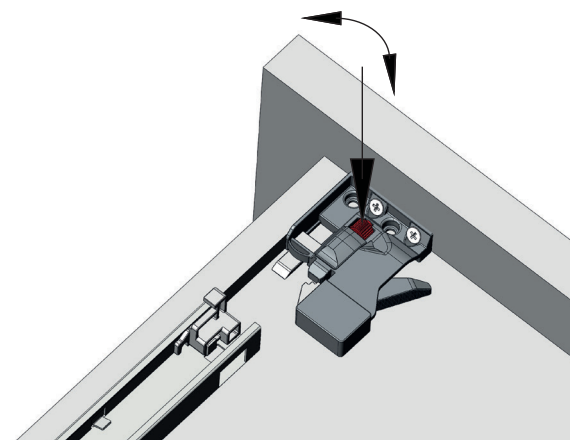
2. Install left/ right handle in the front of the drawer



3. Install the drawer on the runners, slide hooks insert into the pre-drilled holes on the drawer back panel



4. Adjust the front panel with plastic wheel on the handle, 0-2.5mm



5. Push the handle lever to unlock the drawer, then pull out the drawer

